

Rev: 02 @ 20200919

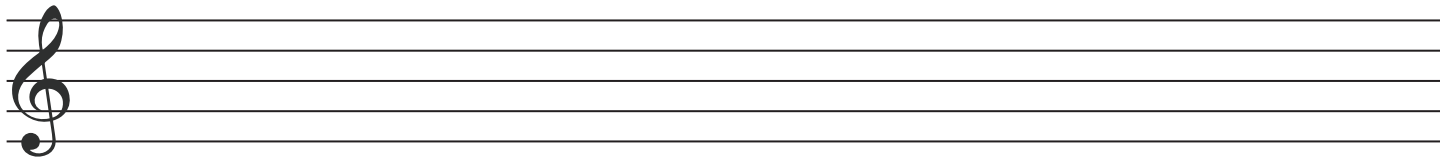
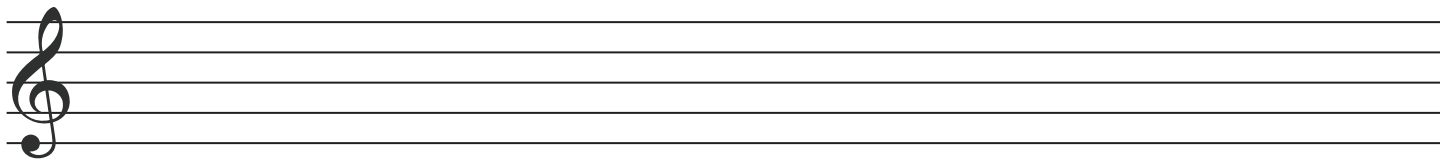
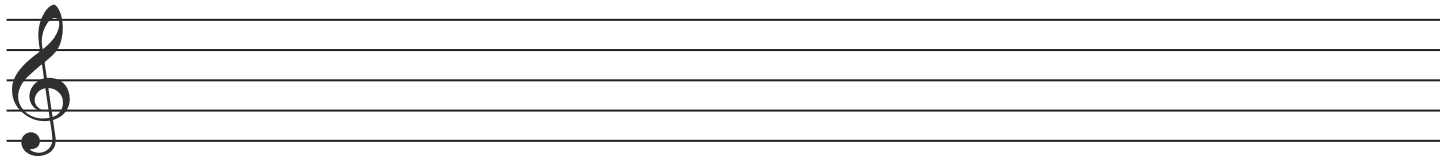
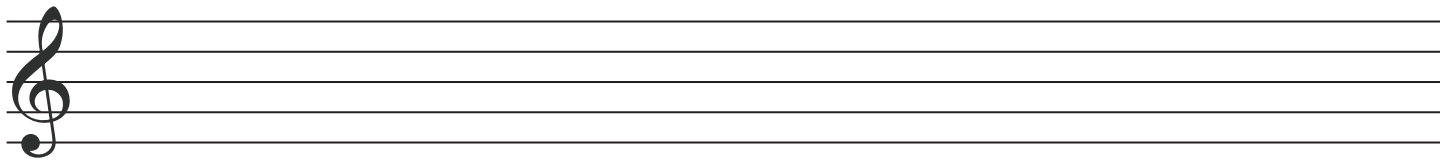
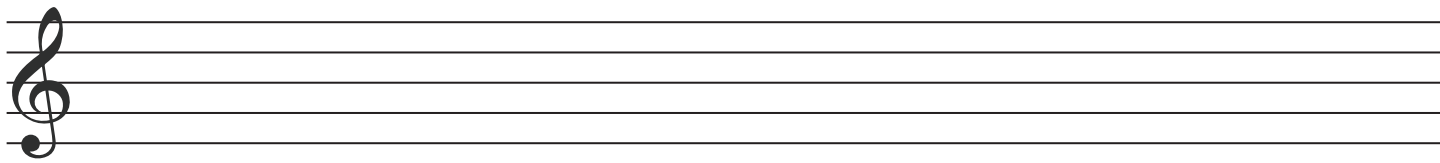
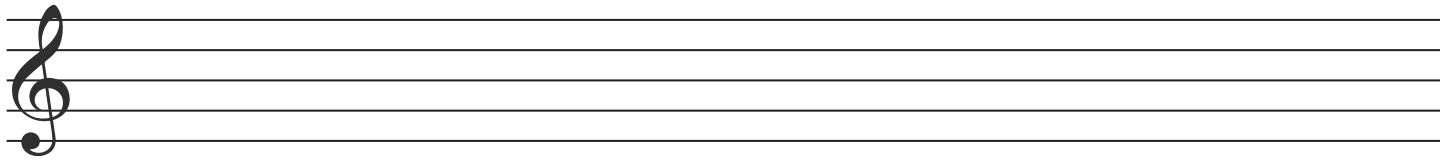
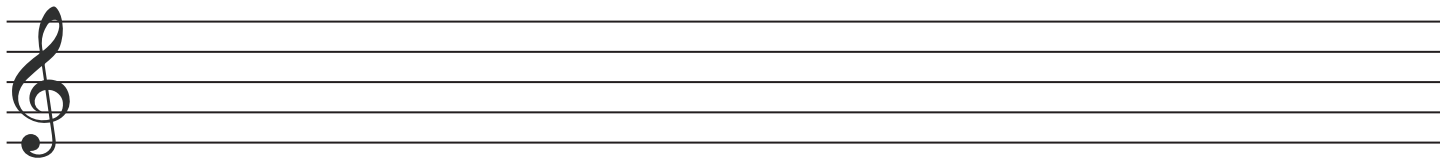
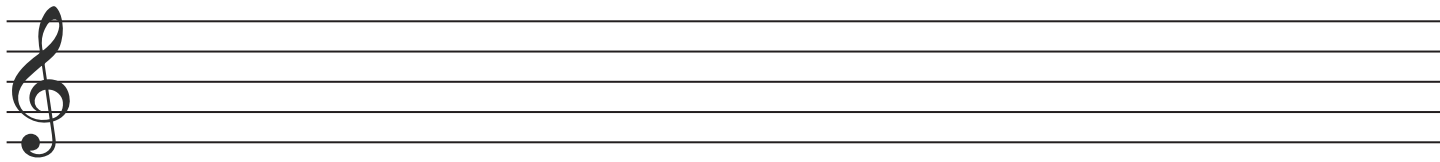
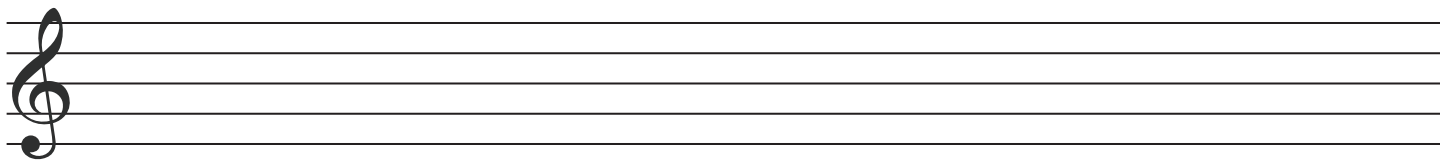
Εκτυπώσιμα προσχέδια



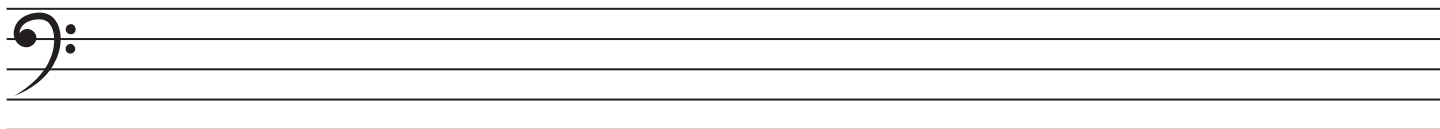
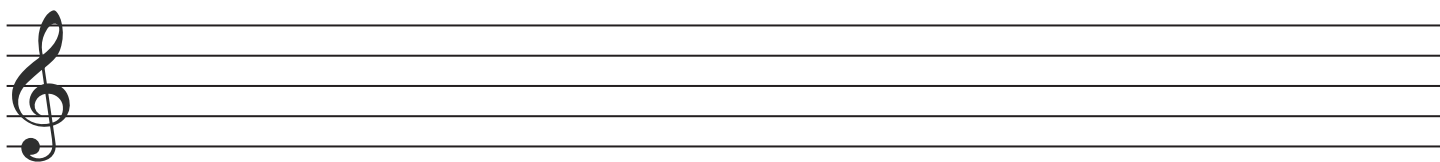
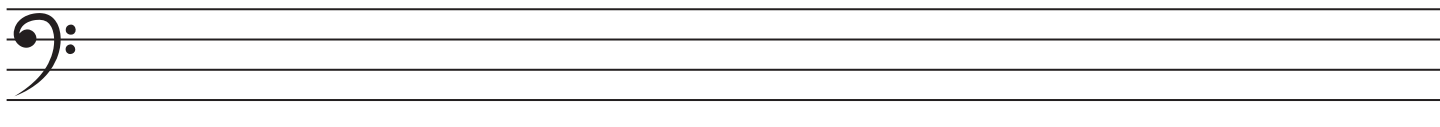
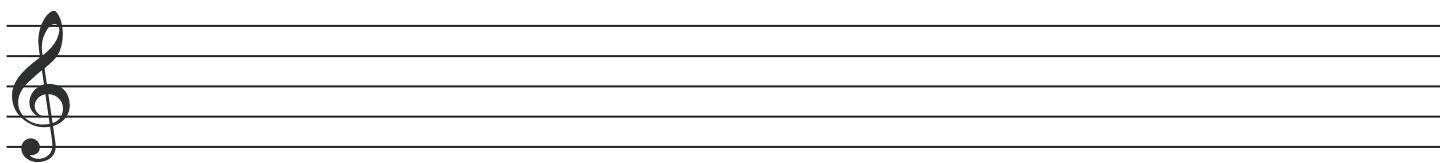
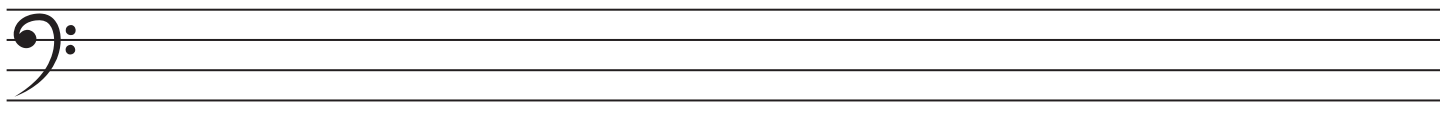
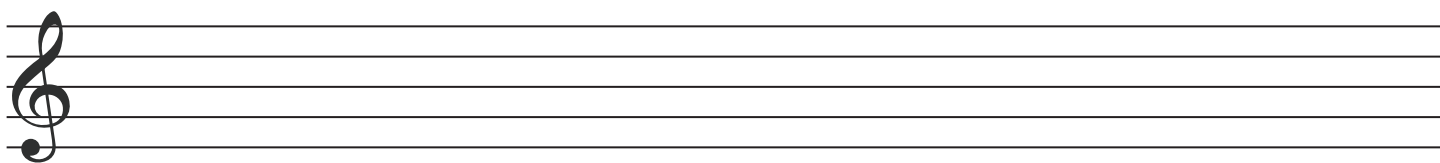
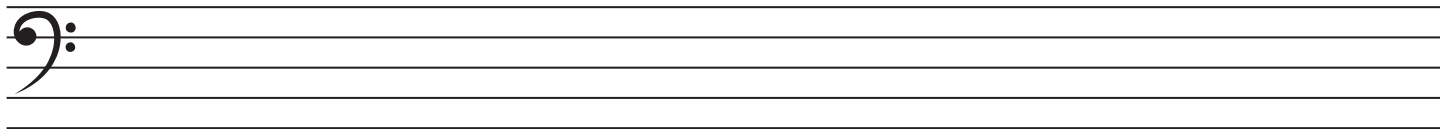
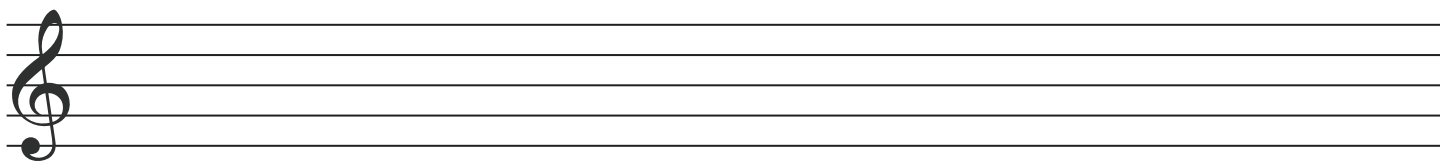
free prints by nml.gr

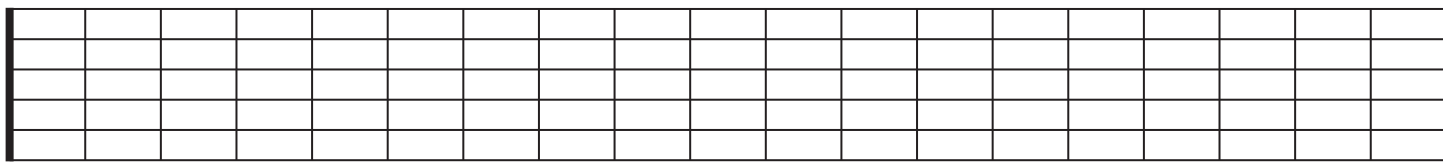
CONTENTS

1. Score - Sol
2. Score - Fa
3. Score - Sol | Score - Fa
4. Fretboard 6str
5. Fretboard 4str
6. Fretboard 3str
7. Fretboard Small 6str
8. Fretboard Small 4str
9. Fretboard Small 3str
10. Chord Diagrams 6str
11. Chord Diagrams 4str
12. Chord Diagrams 3str
13. Slash / Chord Notation
14. Score - Fa | Tab 4str (w/ string name: GDAE)
15. Score - Fa | Tab 4str (plain)
16. Score - Sol | Tab 6str (w/ string name: EBGDAE)
17. Score - Sol | Tab 6str (plain)
18. Score - Sol | Tab 4str (w/ string name: DAFC)
19. Score - Sol | Tab 4str (plain)
20. Score - Sol | Tab 3str (w/ string name: DAD)
21. Score - Sol | Tab 3str (plain)
22. Tab 6str (w/ string name: EBGDAE)
23. Tab 4str (w/ string name: DAFC)
24. Tab 3str (w/ string name: DAD)
25. Tab 6str (plain)
26. Tab 4str (plain)
27. Tab 3str (plain)
28. Tab 5str (plain)

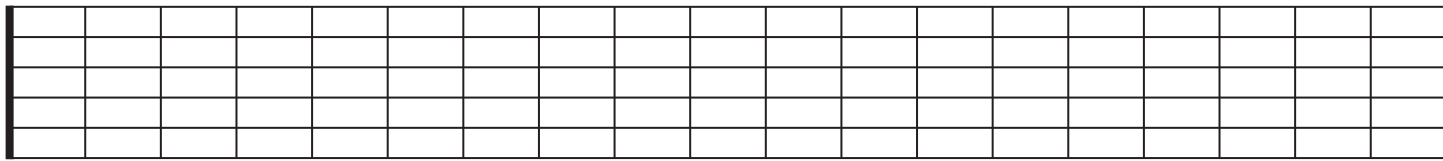




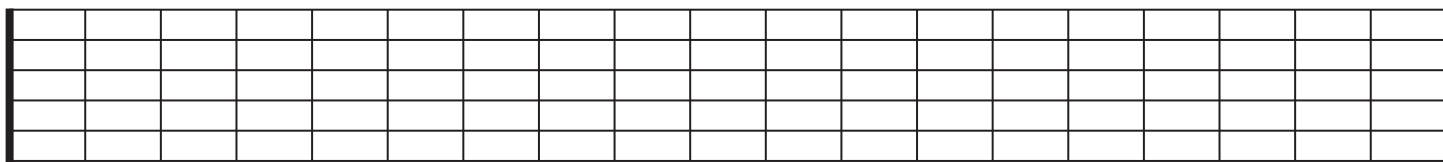




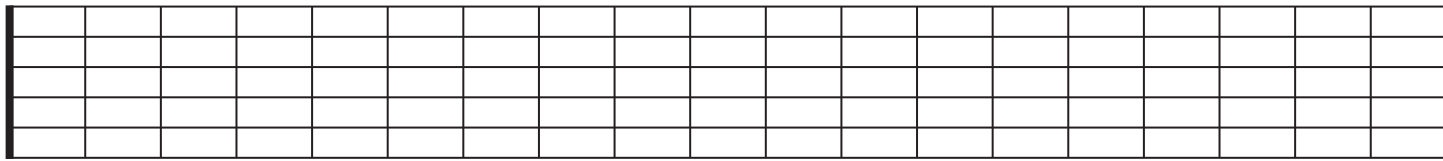
• • • •



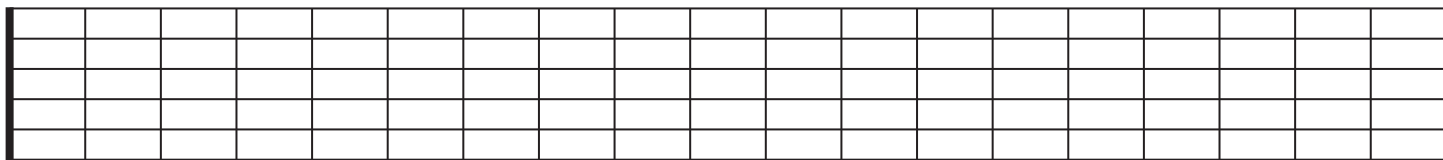
• • • •



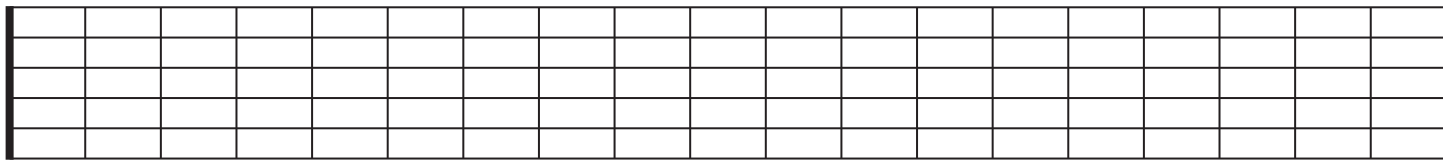
• • • •



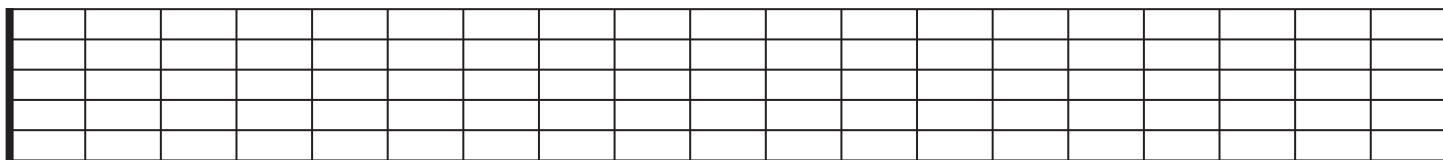
• • • •



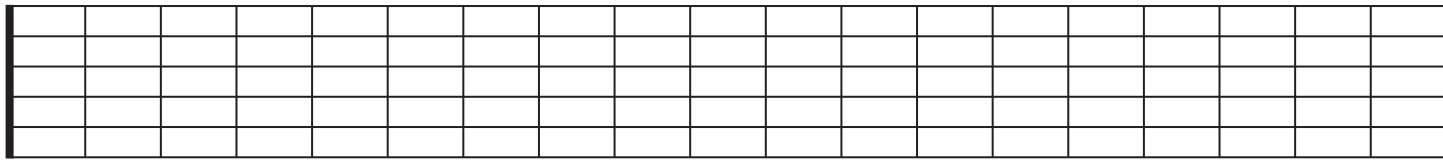
• • • •



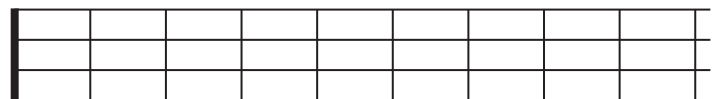
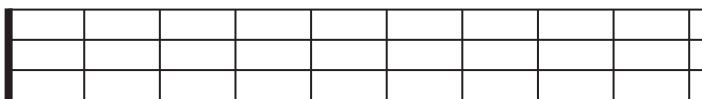
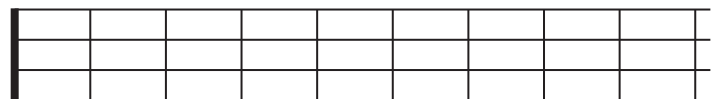
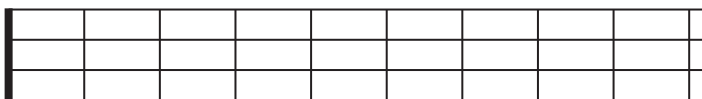
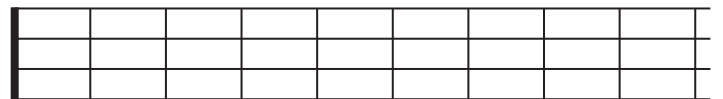
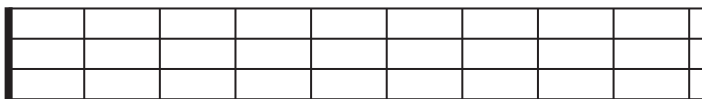
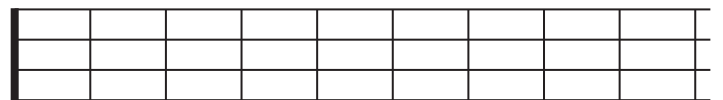
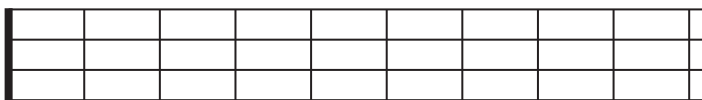
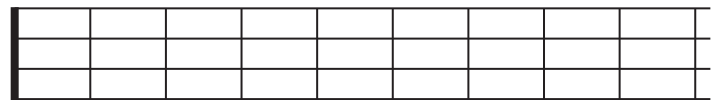
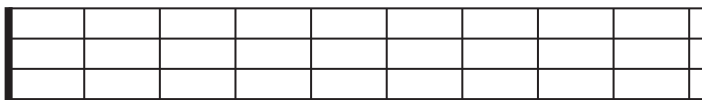
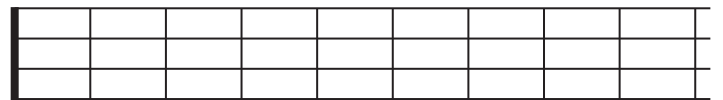
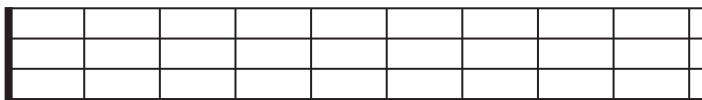
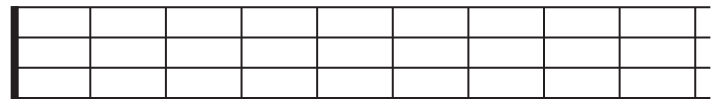
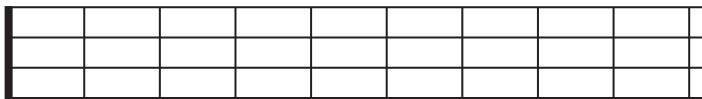
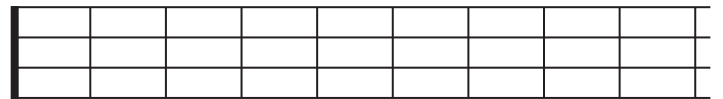
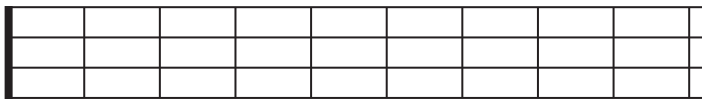
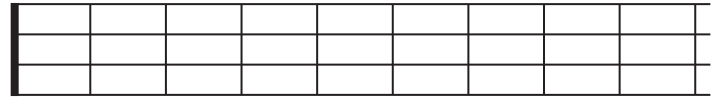
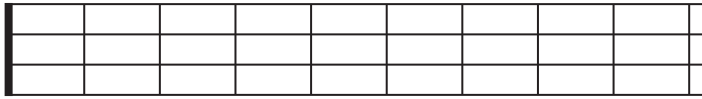
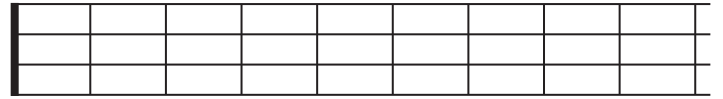
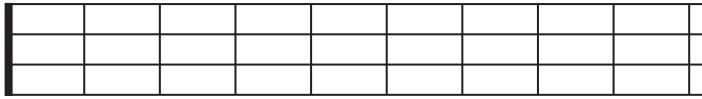
• • • •

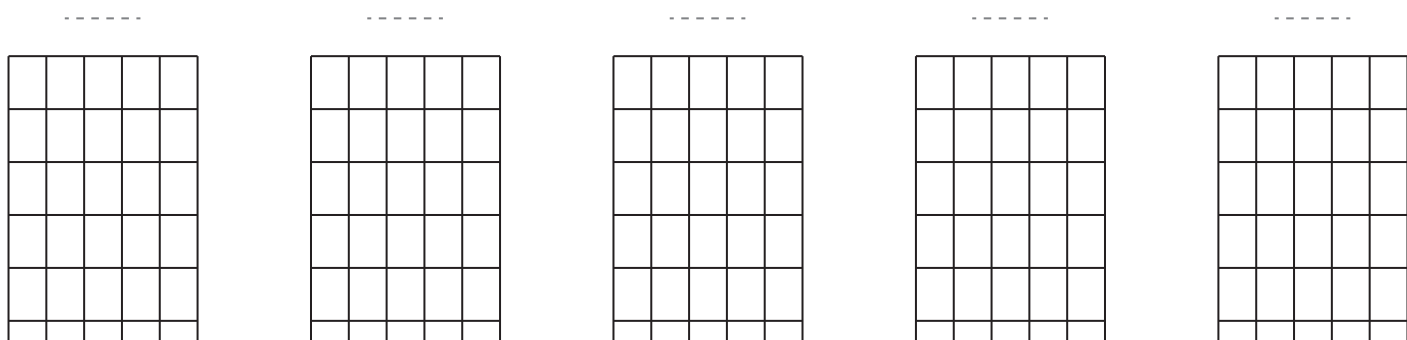
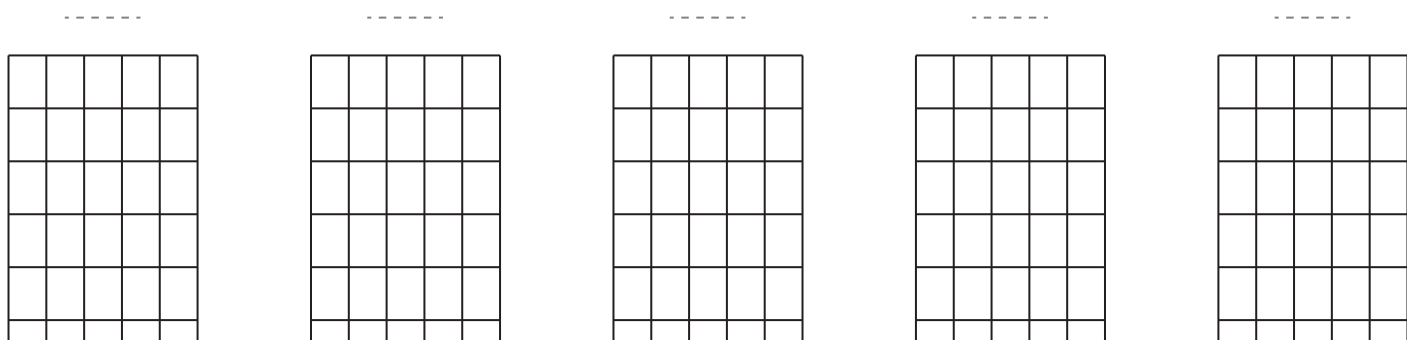
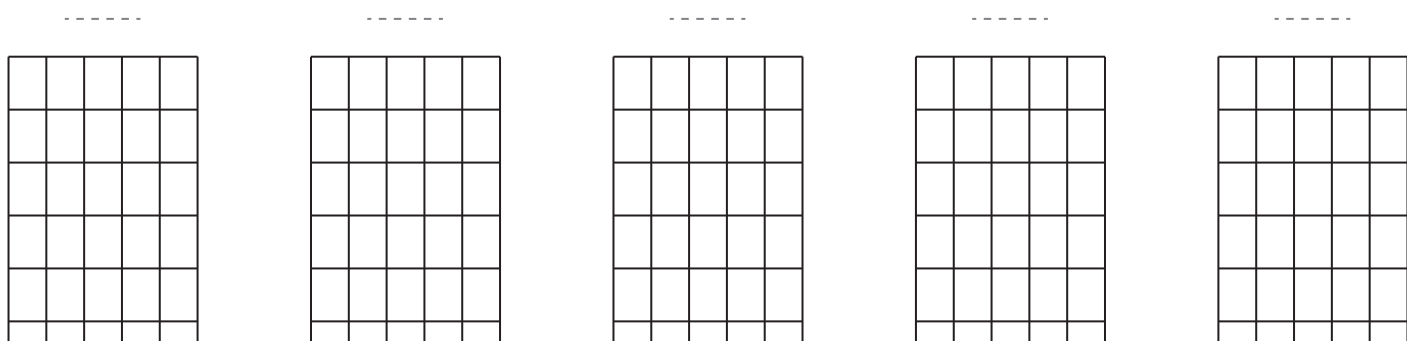
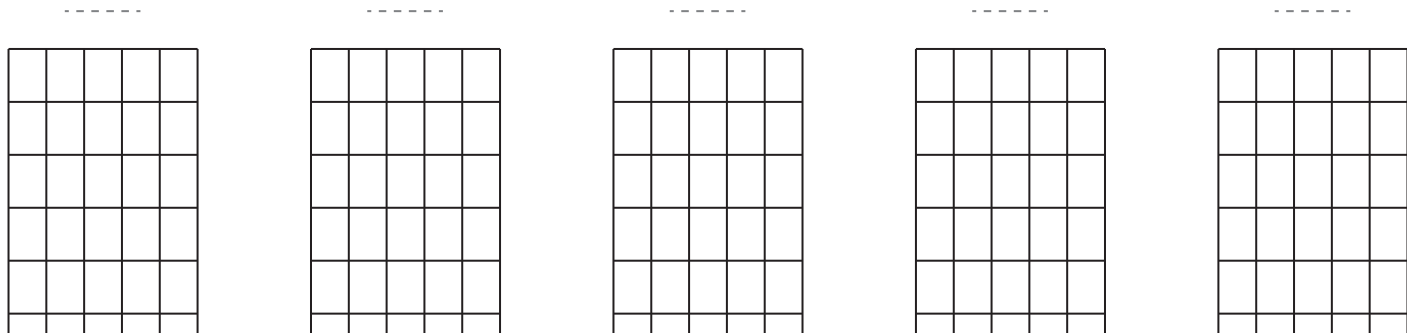


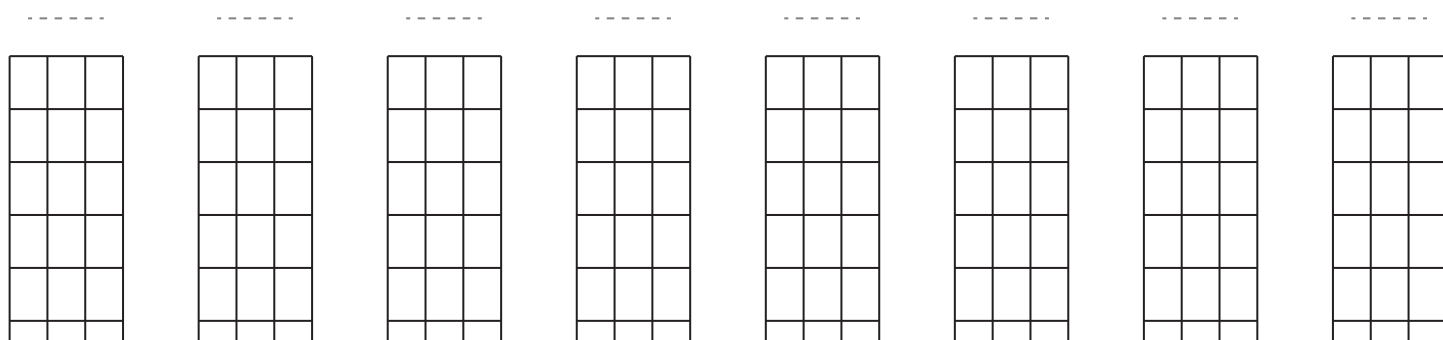
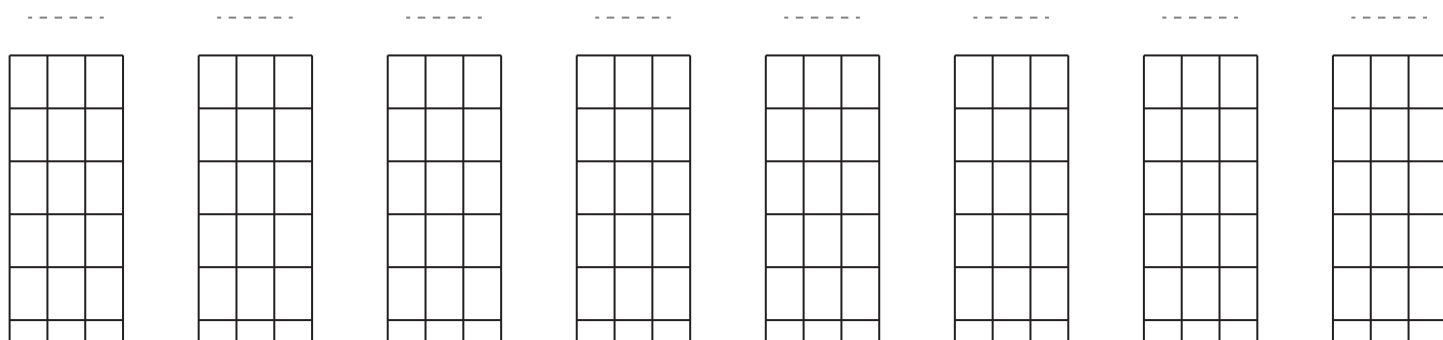
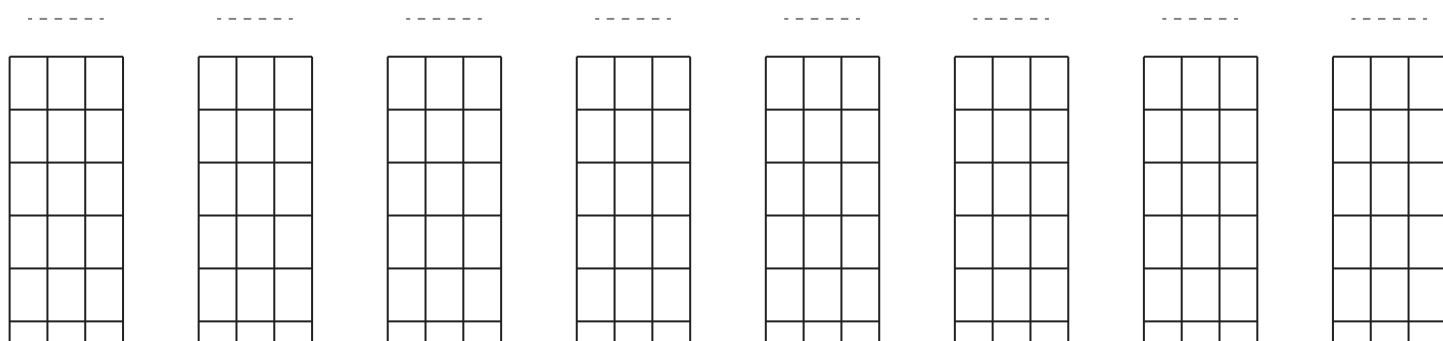
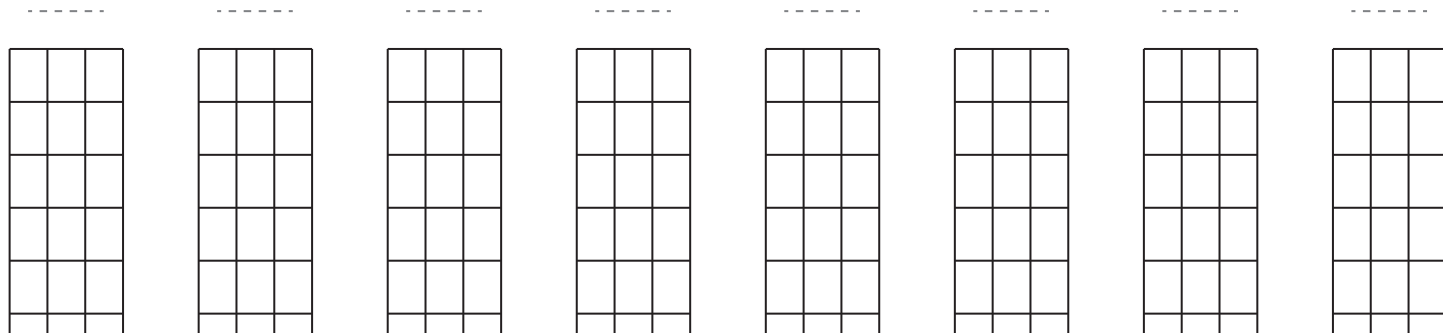
• • • •



• • • •











A musical staff with a bass clef. The staff is empty. Below the staff, the notes G, D, A, and E are listed vertically, corresponding to the four lines of the staff.

A musical staff with a bass clef. The staff is empty. Below the staff, the notes G, D, A, and E are listed vertically, corresponding to the four lines of the staff.

A musical staff with a bass clef. The staff is empty. Below the staff, the notes G, D, A, and E are listed vertically, corresponding to the four lines of the staff.

A musical staff with a bass clef. The staff is empty. Below the staff, the notes G, D, A, and E are listed vertically, corresponding to the four lines of the staff.

A musical staff with a bass clef. The staff is empty. Below the staff, the notes G, D, A, and E are listed vertically, corresponding to the four lines of the staff.



A musical staff with a treble clef. The notes e, B, G, D, A, and E are written on the lines from top to bottom, corresponding to the first six lines of the staff.

A musical staff with a treble clef. The notes e, B, G, D, A, and E are written on the lines from top to bottom, corresponding to the first six lines of the staff.

A musical staff with a treble clef. The notes e, B, G, D, A, and E are written on the lines from top to bottom, corresponding to the first six lines of the staff.

A musical staff with a treble clef. The notes e, B, G, D, A, and E are written on the lines from top to bottom, corresponding to the first six lines of the staff.



T
A
B

A musical staff system for guitar notation. It features a treble clef on the left side of a five-line staff. Below the staff are three additional lines, with the letters 'T', 'A', and 'B' stacked vertically on the left side, indicating the strings.

T
A
B

A musical staff system for guitar notation, identical in format to the first one, with a treble clef and 'T A B' string indicators.

T
A
B

A musical staff system for guitar notation, identical in format to the first one, with a treble clef and 'T A B' string indicators.

T
A
B

A musical staff system for guitar notation, identical in format to the first one, with a treble clef and 'T A B' string indicators.



A musical staff with a treble clef. The notes D, A, F, and C are placed on the first, second, third, and fourth lines of the staff, respectively.

A musical staff with a treble clef. The notes D, A, F, and C are placed on the first, second, third, and fourth lines of the staff, respectively.

A musical staff with a treble clef. The notes D, A, F, and C are placed on the first, second, third, and fourth lines of the staff, respectively.

A musical staff with a treble clef. The notes D, A, F, and C are placed on the first, second, third, and fourth lines of the staff, respectively.

A musical staff with a treble clef. The notes D, A, F, and C are placed on the first, second, third, and fourth lines of the staff, respectively.



A musical staff with a treble clef on the left. Below the staff are three horizontal lines labeled 'T', 'A', and 'B' from top to bottom, representing guitar strings.

A musical staff with a treble clef on the left. Below the staff are three horizontal lines labeled 'T', 'A', and 'B' from top to bottom, representing guitar strings.

A musical staff with a treble clef on the left. Below the staff are three horizontal lines labeled 'T', 'A', and 'B' from top to bottom, representing guitar strings.

A musical staff with a treble clef on the left. Below the staff are three horizontal lines labeled 'T', 'A', and 'B' from top to bottom, representing guitar strings.

A musical staff with a treble clef on the left. Below the staff are three horizontal lines labeled 'T', 'A', and 'B' from top to bottom, representing guitar strings.



A musical staff with a treble clef. Below the staff is a chord diagram for a D major triad, consisting of three horizontal lines with tick marks on the first, second, and fourth lines, labeled 'D', 'A', and 'D' from top to bottom.

A musical staff with a treble clef. Below the staff is a chord diagram for a D major triad, consisting of three horizontal lines with tick marks on the first, second, and fourth lines, labeled 'D', 'A', and 'D' from top to bottom.

A musical staff with a treble clef. Below the staff is a chord diagram for a D major triad, consisting of three horizontal lines with tick marks on the first, second, and fourth lines, labeled 'D', 'A', and 'D' from top to bottom.

A musical staff with a treble clef. Below the staff is a chord diagram for a D major triad, consisting of three horizontal lines with tick marks on the first, second, and fourth lines, labeled 'D', 'A', and 'D' from top to bottom.

A musical staff with a treble clef. Below the staff is a chord diagram for a D major triad, consisting of three horizontal lines with tick marks on the first, second, and fourth lines, labeled 'D', 'A', and 'D' from top to bottom.



A musical staff with a treble clef. Below the staff are three lines labeled 'T', 'A', and 'B' from top to bottom, representing guitar strings.

A musical staff with a treble clef. Below the staff are three lines labeled 'T', 'A', and 'B' from top to bottom, representing guitar strings.

A musical staff with a treble clef. Below the staff are three lines labeled 'T', 'A', and 'B' from top to bottom, representing guitar strings.

A musical staff with a treble clef. Below the staff are three lines labeled 'T', 'A', and 'B' from top to bottom, representing guitar strings.

A musical staff with a treble clef. Below the staff are three lines labeled 'T', 'A', and 'B' from top to bottom, representing guitar strings.



— e
— B
— G
— D
— A
— E

— e
— B
— G
— D
— A
— E

— e
— B
— G
— D
— A
— E

— e
— B
— G
— D
— A
— E

— e
— B
— G
— D
— A
— E

— e
— B
— G
— D
— A
— E

— e
— B
— G
— D
— A
— E



- D
- A
- F
- C

- D
- A
- F
- C

- D
- A
- F
- C

- D
- A
- F
- C

- D
- A
- F
- C

- D
- A
- F
- C

- D
- A
- F
- C

- D
- A
- F
- C

- D
- A
- F
- C

- D
- A
- F
- C



— D _____
— A _____
— D _____

— D _____
— A _____
— D _____

— D _____
— A _____
— D _____

— D _____
— A _____
— D _____

— D _____
— A _____
— D _____

— D _____
— A _____
— D _____

— D _____
— A _____
— D _____

— D _____
— A _____
— D _____

— D _____
— A _____
— D _____

— D _____
— A _____
— D _____

— D _____
— A _____
— D _____

— D _____
— A _____
— D _____

— D _____
— A _____
— D _____



T
A
B

T
A
B

T
A
B

T
A
B

T
A
B

T
A
B

T
A
B



T
A
B

T
A
B

T
A
B

T
A
B

T
A
B

T
A
B

T
A
B

T
A
B

T
A
B

T
A
B



- T _____
- A _____
- B _____

- T _____
- A _____
- B _____

- T _____
- A _____
- B _____

- T _____
- A _____
- B _____

- T _____
- A _____
- B _____

- T _____
- A _____
- B _____

- T _____
- A _____
- B _____

- T _____
- A _____
- B _____

- T _____
- A _____
- B _____

- T _____
- A _____
- B _____

- T _____
- A _____
- B _____

- T _____
- A _____
- B _____

- T _____
- A _____
- B _____



—
— T
— A
— B
—

—
— T
— A
— B
—

—
— T
— A
— B
—

—
— T
— A
— B
—

—
— T
— A
— B
—

—
— T
— A
— B
—

—
— T
— A
— B
—

—
— T
— A
— B
—